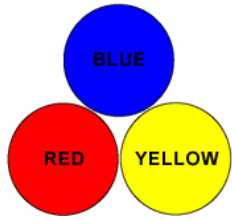


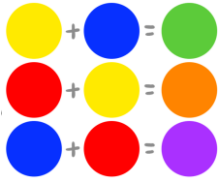


Year 3 - Drawing and Painting - Autumn

Primary Colours



Secondary Colours



Mix Brown



Tints

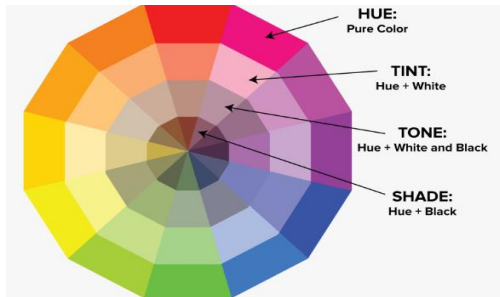
Adding white

Tone

Adding white and black

Shade

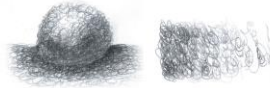
Adding black



Stippling



Scumbling



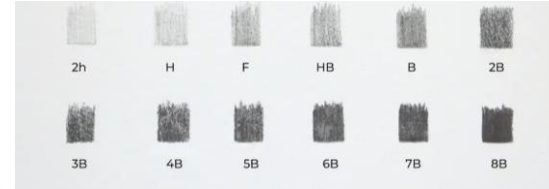
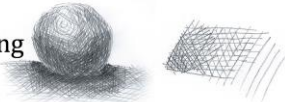
Shading



Smudging



Crosshatching



H = hard
B = soft



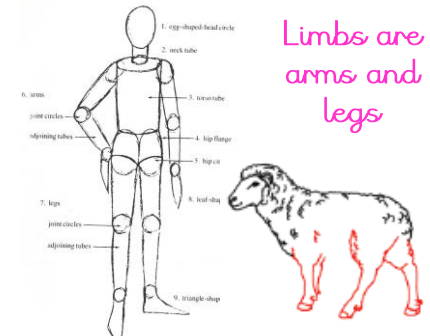
Use your hands and fingers as tools to blend soft pastel or charcoal

Accurately draw what they see - correct placement of limbs, facial features and scale

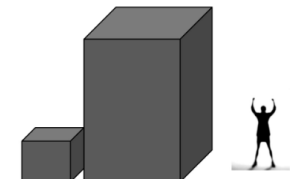
In landscapes, show larger objects in the foreground, smaller in the background. This shows scale and perspective.

Composition

- Foreground
- Background
- Distance
- Overlap
- Layer



SCALE



Wet felting.

Work in steps

1. Start the landscape and spray with a soap mixture to combine the wool fibres.
2. Add details to the foreground and use soap mixture again before rolling the design.
3. Rinse in the sink and leave to dry.



Key Artist

Andrea Hunter

Andrea Hunter is a felt artist. She creates art work with wool. Andrea gets her inspiration from natural landscapes, especially the Yorkshire Dales.

Texture and mark making



Cross-hatching



Broad arcs



Ripples