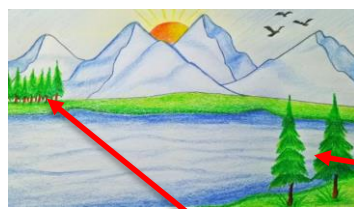
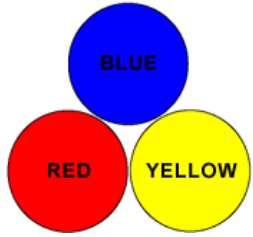




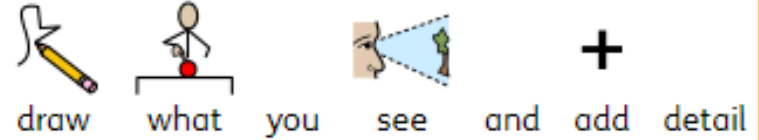
Primary Colours



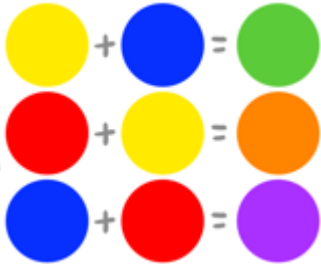
Year 2 - Printing - Autumn

The trees are bigger and more detailed in the foreground to show distance.

In landscapes, objects in the background are smaller than in the foreground.

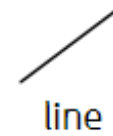


Secondary colours are orange, green and purple.



Composition

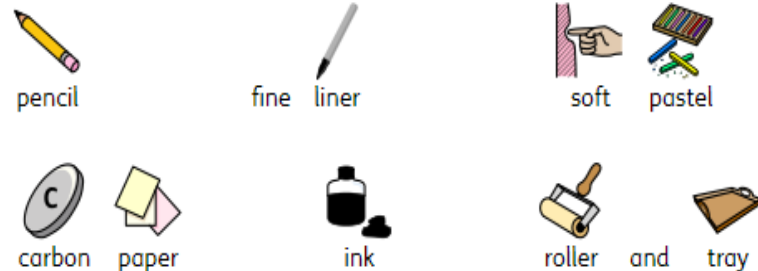
Background
Foreground
Distance



line

The pressure (how hard you press on) can make different tones. (light or dark)

Mix brown
Blue + red + yellow = brown



shape



pattern



tone

Add white to make a

TINT

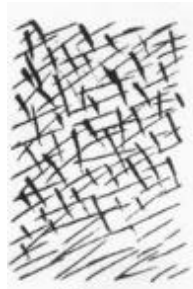
Add white



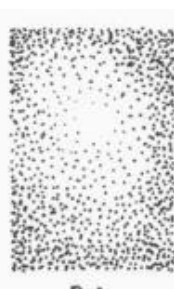
Texture & Mark Making



Ragged



Sharp



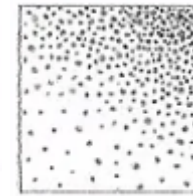
Dots



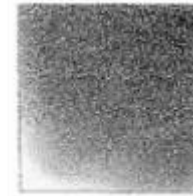
Dashes



Hatching



Stippling



Blending



monoprinting

You will need:
Ink



Printing roller



1. Draw design on a piece of paper.
2. In a tray, use a good amount of printing ink and roller out evenly with a roller
3. Place the paper over the ink (design side up). Tape to the table if children need this to help keep the paper in place.
4. Go over the design with a pencil.
5. Peel the paper off the tray and the design will be on the back.



Key Artist

Lynda Thomas
Local to Hebden Bridge

She is an artist and print maker. She is inspired by the local views of Halifax and Calderdale